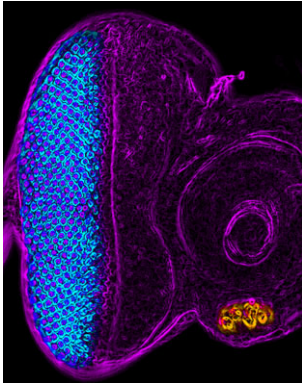
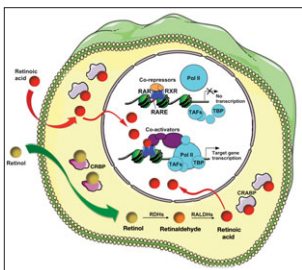


Development



Cover: A third instar *Drosophila* eye antenna disc in which the homeobox transcription factor *Sine oculis* has induced the formation of an ectopic eye within the antennal field by repressing transcription of the antennal/head capsule selector gene *cut*. Photoreceptors in the normal (blue) and ectopic (orange) eye fields are shown; purple, F-actin. See **Research article by Anderson et al. on p. 991.**



Retinoic acid is a vitamin A-derived signalling molecule that acts as ligand for nuclear receptors, converting them from transcriptional repressors to activators. Here, Muriel Rhinn and Pascal Dollé review the main functions of retinoic acid during embryogenesis. See **Review on p. 843.**

PRIMERS

- 829** Human pre-implantation embryo development
Niakan, K. K., Han, J., Pedersen, R. A., Simon, C. and Reijo Pera, R. A.
- 843** Retinoic acid signalling during development
Rhinn, M. and Dollé, P.

DEVELOPMENT AND STEM CELLS

- 859** S6K links cell fate, cell cycle and nutrient response in *C. elegans* germline stem/progenitor cells
Korta, D. Z., Tuck, S. and Hubbard, E. J. A.
- 871** The roles of FGF and MAP kinase signaling in the segregation of the epiblast and hypoblast cell lineages in bovine and human embryos
Kuijk, E. W., van Tol, L. T. A., Van de Velde, H., Wubbolts, R., Welling, M., Geijssen, N. and Roelen, B. A. J.

RESEARCH ARTICLES

- 883** The establishment of asymmetry in *Arabidopsis* lateral root founder cells is regulated by LBD16/ASL18 and related LBD/ASL proteins
Goh, T., Joi, S., Mimura, T. and Fukaki, H.
- 894** Cell-autonomous FGF signaling regulates anteroposterior patterning and neuronal differentiation in the mesodiencephalic dopaminergic progenitor domain
Lahti, L., Peltopuro, P., Piepponen, T. P. and Partanen, J.
- 906** Dusky-like functions as a Rab11 effector for the deposition of cuticle during *Drosophila* bristle development
Nagaraj, R. and Adler, P. N.
- 917** Cis-regulatory properties of medaka synexpression groups
Ramialison, M., Reinhardt, R., Henrich, T., Wittbrodt, B., Kellner, T., Lowy, C. M. and Wittbrodt, J.
- 929** Bimodal control of Hoxd gene transcription in the spinal cord defines two regulatory subclusters
Tschopp, P., Christen, A. J. and Duboule, D.
- 940** The Her7 node modulates the network topology of the zebrafish segmentation clock via sequestration of the Hes6 hub
Trofka, A., Schwendinger-Schreck, J., Brend, T., Pontius, W., Emonet, T. and Holley, S. A.
- 948** SHP-2 acts via ROCK to regulate the cardiac actin cytoskeleton
Langdon, Y., Tandon, P., Paden, E., Duddy, J., Taylor, J. M. and Conlon, F. L.
- 958** Musculin and TCF21 coordinate the maintenance of myogenic regulatory factor expression levels during mouse craniofacial development
Moncaut, N., Cross, J. W., Siligan, C., Keith, A., Taylor, K., Rigby, P. W. J. and Carvajal, J. J.
- 968** Regulation of cochlear convergent extension by the vertebrate planar cell polarity pathway is dependent on p120-catenin
Chacon-Heszele, M. F., Ren, D., Reynolds, A. B., Chi, F. and Chen, P.

- 979 Extracellular leucine-rich repeat proteins are required to organize the apical extracellular matrix and maintain epithelial junction integrity in *C. elegans*
Mancuso, V. P., Parry, J. M., Storer, L., Poggioli, C., Nguyen, K. C. Q., Hall, D. H. and Sundaram, M. V.
- 991 Dual transcriptional activities of SIX proteins define their roles in normal and ectopic eye development
Anderson, A. M., Weasner, B. M., Weasner, B. P. and Kumar, J. P.
- 1001 Org-1, the *Drosophila* ortholog of Tbx1, is a direct activator of known identity genes during muscle specification
Schaub, C., Nagaso, H., Jin, H. and Frasch, M.
- 1013 *Nematostella vectensis* *achaete-scute* homolog *NvashA* regulates embryonic ectodermal neurogenesis and represents an ancient component of the metazoan neural specification pathway
Layden, M. J., Boekhout, M. and Martindale, M. Q.
- 1023 Initiation of synapse formation by Wnt-induced MuSK endocytosis
Gordon, L. R., Gribble, K. D., Syrett, C. M. and Granato, M.
- 1034 Sharpening of the anterior neural border in the chick by rostral endoderm signalling
Sanchez-Arrones, L., Stern, C. D., Bovolenta, P. and Puelles, L.