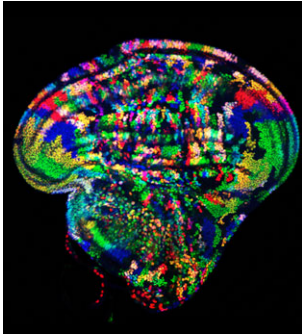
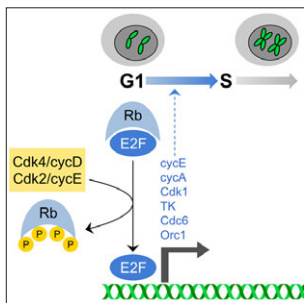


Development



Cover: The TIE-DYE combinatorial labelling system demonstrates that expression of *UAS-dpp* in the *Drosophila* wing-imaginal disc increases growth of both *dpp*-expressing and wild-type clones, especially in the lateral parts of the disc. Individual clones express random combinations of three markers: GFP (green), RFP (red) and β -galactosidase (blue). The RFP-expressing clones also express other *UAS*-driven transgenes. See Research article by Worley et al. on p. 3275.



In this issue, Shuhui Lim and Philipp Kaldis discuss recent evidence that cyclins, cyclin-dependent kinases and their inhibitors play important roles in development beyond direct regulation of the cell cycle. See Review on p. 3079.

HYPOTHESIS

- 3069** The mechanical control of nervous system development
Franze, K.

REVIEW

- 3079** Cdks, cyclins and CKIs: roles beyond cell cycle regulation
Lim, S. and Kaldis, P.

STEM CELLS AND REGENERATION

- 3095** ERF and ETV3L are retinoic acid-inducible repressors required for primary neurogenesis
Janesick, A., Abbey, R., Chung, C., Liu, S., Taketani, M. and Blumberg, B.
- 3107** Netrin 1 contributes to vascular remodeling in the subventricular zone and promotes progenitor emigration after demyelination
Cayre, M., Courtès, S., Martineau, F., Giordano, M., Arnaud, K., Zamaron, A. and Durbec, P.
- 3118** Mcl1 regulates the terminal mitosis of neural precursor cells in the mammalian brain through p27^{Kip1}
Hasan, S. M. M., Sheen, A. D., Power, A. M., Langevin, L. M., Xiong, J., Furlong, M., Day, K., Schuurmans, C., Opferman, J. T. and Vanderluit, J. L.
- 3128** Wnt/ β -catenin signalling regulates *Sox17* expression and is essential for organizer and endoderm formation in the mouse
Engert, S., Burtscher, I., Liao, W. P., Dulev, S., Schotta, G. and Lickert, H.

RESEARCH REPORT

- 3139** RhoA and Cdc42 are required in pre-migratory progenitors of the medial ganglionic eminence ventricular zone for proper cortical interneuron migration
Katayama, K., Imai, F., Campbell, K., Lang, R. A., Zheng, Y. and Yoshida, Y.

RESEARCH ARTICLES

- 3146** Apical constriction initiates new bud formation during monopodial branching of the embryonic chicken lung
Kim, H. Y., Varner, V. D. and Nelson, C. M.
- 3156** Jeb/Alk signalling regulates the *Lame duck* GLI family transcription factor in the *Drosophila* visceral mesoderm
Popichenko, D., Hugosson, F., Sjögren, C., Dogru, M., Yamazaki, Y., Wolfstetter, G., Schönherr, C., Fallah, M., Hallberg, B., Nguyen, H. and Palmer, R. H.
- 3167** Analysis of Gpr126 function defines distinct mechanisms controlling the initiation and maturation of myelin
Glenn, T. D. and Talbot, W. S.
- 3176** Tbx20 acts upstream of Wnt signaling to regulate endocardial cushion formation and valve remodeling during mouse cardiogenesis
Cai, X., Zhang, W., Hu, J., Zhang, L., Sultana, N., Wu, B., Cai, W., Zhou, B. and Cai, C.-L.
- 3188** Notch1 is required in newly postmitotic cells to inhibit the rod photoreceptor fate
Mizeracka, K., DeMaso, C. R. and Cepko, C. L.
- 3198** Rho activation is apically restricted by Arhgap1 in neural crest cells and drives epithelial-to-mesenchymal transition
Clay, M. R. and Halloran, M. C.

- 3210 Cell and tissue dynamics during *Tribolium* embryogenesis revealed by versatile fluorescence labeling approaches
Benton, M. A., Akam, M. and Pavlopoulos, A.
- 3221 Molecular dissection of IZUMO1, a sperm protein essential for sperm-egg fusion
Inoue, N., Hamada, D., Kamikubo, H., Hirata, K., Kataoka, M., Yamamoto, M., Ikawa, M., Okabe, M. and Hagihara, Y.
- 3230 Phagocytic receptor signaling regulates clathrin and epsin-mediated cytoskeletal remodeling during apoptotic cell engulfment in *C. elegans*
Shen, Q., He, B., Lu, N., Conradt, B., Grant, B. D. and Zhou, Z.
- 3244 Short-lived Her proteins drive robust synchronized oscillations in the zebrafish segmentation clock
Ay, A., Knierer, S., Sperlea, A., Holland, J. and Özbudak, E. M.
- 3254 Pdgfra protects against ethanol-induced craniofacial defects in a zebrafish model of FASD
McCarthy, N., Wetherill, L., Lovely, C. B., Swartz, M. E., Foroud, T. M. and Eberhart, J. K.
- TECHNIQUES AND RESOURCES**
- 3266 Systematic quantification of developmental phenotypes at single-cell resolution during embryogenesis
Moore, J. L., Du, Z. and Bao, Z.
- 3275 TIE-DYE: a combinatorial marking system to visualize and genetically manipulate clones during development in *Drosophila melanogaster*
Worley, M. I., Setiawan, L. and Hariharan, I. K.
- 3285 Three-dimensional culture and cAMP signaling promote the maturation of human pluripotent stem cell-derived hepatocytes
Ogawa, S., Surapisitchat, J., Virtanen, C., Ogawa, M., Niapour, M., Sugamori, K. S., Wang, S., Tamblyn, L., Guillemette, C., Hoffmann, E., Zhao, B., Strom, S., Laposa, R. R., Tyndale, R. F., Grant, D. M. and Keller, G.