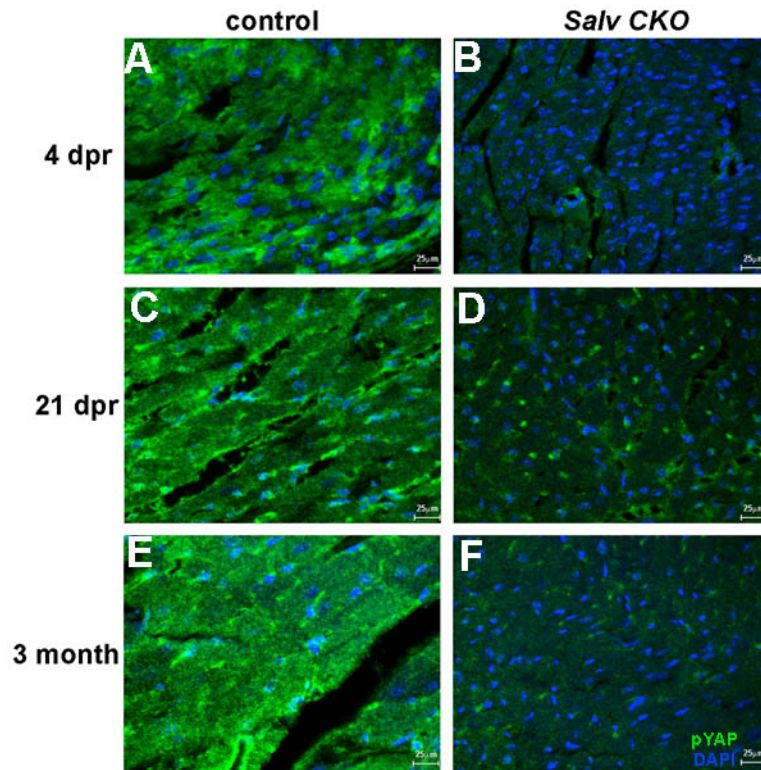


**Fig. S1. Flow analysis of cardiomyocyte nuclei.** (A) Nuclei were isolated from control, *Salv*, and *Lats* CKO adult mouse hearts and stained for Ki-67 (cell cycle marker) and cTnI (cardiomyocytes) (B) Ploidy analysis. Isolated cardiomyocyte nuclei were stained for cTnI (cardiomyocytes) and 7-AAD (DNA content). For A and B, nuclei were analyzed using BD FACSaria cell sorter and displayed results are from one representative experiment among 3 experiments.



**Fig. S2. Reduced Hippo activity in *Salv CKO* hearts.** Representative 4 dpr (A, B), 12dpr (C, D), and 3 month stage (E, F) border zone control (A, C, E) and *Salv CKO* (B, D, F) coronal heart sections stained with phosphorylated YAP antibodies (pYAP, green) as a marker for Hippo activity. DAPI (blue).